

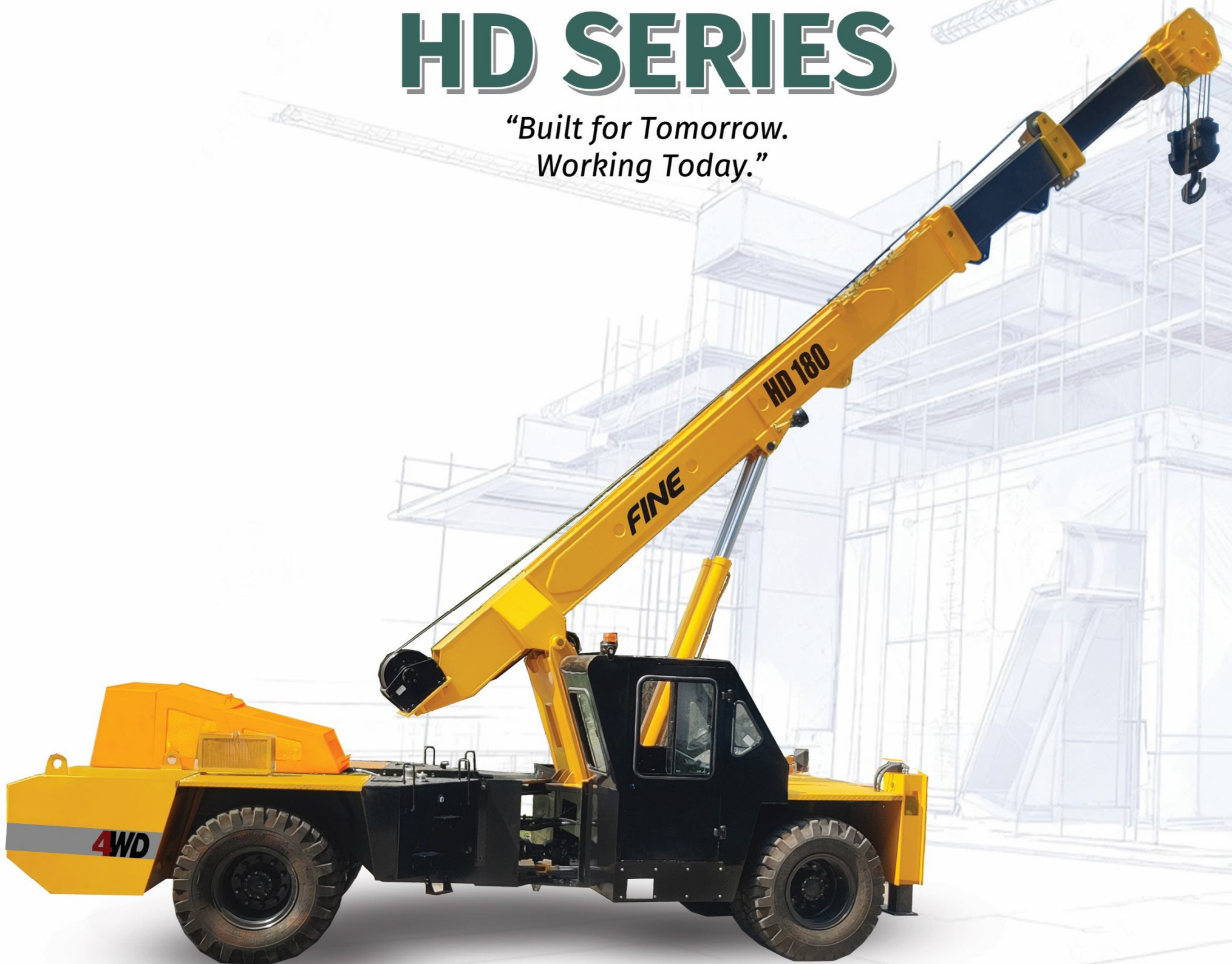
FINE EQUIPMENTS

www.fineequipment.net



FINE NEXT GEN CRANE **HD SERIES**

*"Built for Tomorrow.
Working Today."*



HD 150 & 180

HIGH-RISE OPERATOR SEAT designed to provide maximum comfort during long work shifts.

COMFORT – Hydro pneumatic clutch to ease low clutch force

ENGINE POWER - 74 hp with high back up force

FUEL ECONOMY - Low fuel consumption

SERVICE - 500 hours interval

GEAR BOX - VECV ET40



STRENGTH YOU CAN TRUST



NEXT GENERATION
HD SERIES CRANE
HD 150 & 180

Advanced Comfort, Control
and Productivity
Features



SPECIFICATION:

RATED CAPACITY		HD 150	HD 180
		- 15 Ton at 1.5 mtr radius - 1 Ton at 15.8 mtr radius - Max Hook Height 18.2 mtr	- 18 Ton at 1.5 mtr radius - 1.2 Ton at 15.8 mtr radius - Max Hook Height - 18.2 mtr
SWL based on 85% stability & strength (IS4573)			
Axles			
Front		-Volvo Eicher Make RA 904 rigid axel	-Volvo Eicher Make RA 903 heavy duty rigid axel
Rear		-Volvo Eicher Make RA 901 Rigid Axle mounted with two semi- elliptical springs	- Volvo Eicher Make RA 903 heavy duty rigid axel with two semi – elliptical springs
Tyre		- 8 Nos. - 11X20 - 16 PR	- 8 Nos. - 12X20 - 20 PR
Hoist		- Heavy Duty 2.5 Ton Winch, hydraulically operated with 4/6 falls, built in safety brakes	- Heavy Duty 3.2 Ton capacity winch hydraulically operated with 6 falls, built in safety brakes
Operating Weight			
Front Axle		- 6920 kg	- 7020 Kg
Rear Axle		- 9100 kg	- 9550 Kg
Total		- 16020 kg	- 16710 Kg

SPECIFICATIONS

ENGINE (BS V)

Volvo Eicher make CEV BS V 74 HP Diesel Engine Coupled with Gear Box; Model- 483+ET 40, Turbo Charged Water Cooled, ECU Controlled Engine Management System, developing 74 PS Power @ 2200 RPM or equivalent engine

TRANSMISSION & CLUTCH

Engine is coupled with Synchromesh Transmission Gear Box & Auxiliary Gear Box with Hi/ Low & 2WD/ 4WD mode selector

CLUTCH - Single Dry Type friction clutch plate (self adjusting)

CLUTCH ACTUATION - Pneumatic Assisted Hydraulic Clutch

SPEEDS - 10 Forward & 2 Reverse

BRAKES

Service Fully air operated 'S' CAM dual circuit brakes on front and rear axle

PARKING Air operated, spring actuated, fail safe brakes

HYDRAULIC SYSTEM

Main pump of 46 cc/rev
Control Valve - 6 spool double acting with a built in relief and auxiliary valve

TURNING RADIUS - 7.2 mtr

STRUCTURE AND STABILITY

Robust high strength light weight chassis
Lower CG position and better stability

STANDARD ACCESSORIES

Fly Jib Tyre Guard, Battery Cut off switch
Outriggers Rear View Camera

STEERING

Full power orbitrol with twin hydraulic double acting 40 degree articulation on either side

ELECTRICAL SYSTEM

12 V, DC

BOOM

4 Parts Slotted Boom with 3 parts hydraulically powered & fully synchronized, 4th part power extended and manually pinned for safety

LUFFING RANGE - 10 degree to 65 degree

DIMENSIONS

Wheel Base	3930 mm
Overall Length	10090 mm
Overall Width	2410 mm
Overall Height	3155 mm
Front Wheel track	1810 mm
Rear Wheel Track	1810 mm

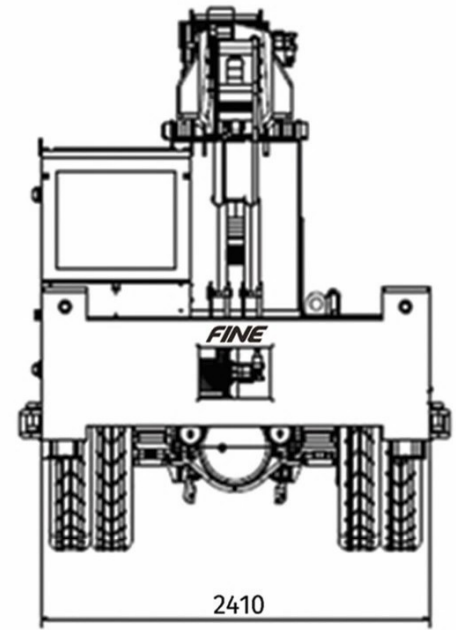
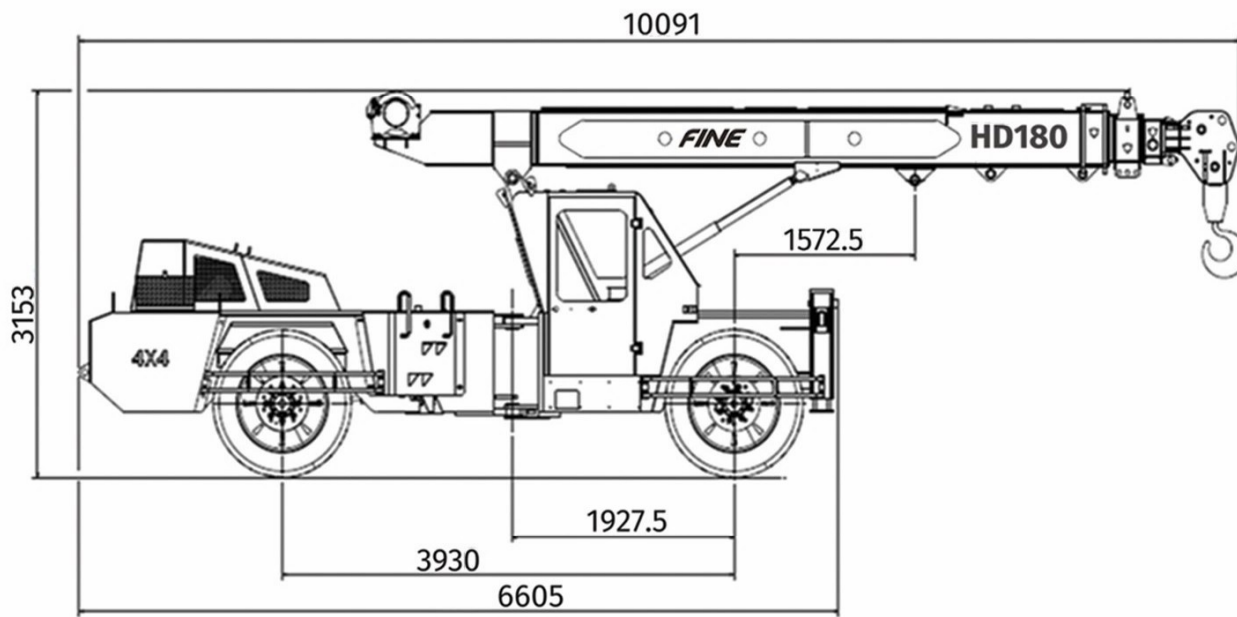
OPTIONAL ACCESSORIES

- | | | |
|--------------|-----------------------|-------------------------------------|
| - AC Cabin | - Beacon light | - Equipment Monitoring System (EMS) |
| - Drag Winch | - Fire extinguisher | - helper seat with platform |
| - Rhino Hook | - Man carrying basket | - SLI with Hydraulic cut off |

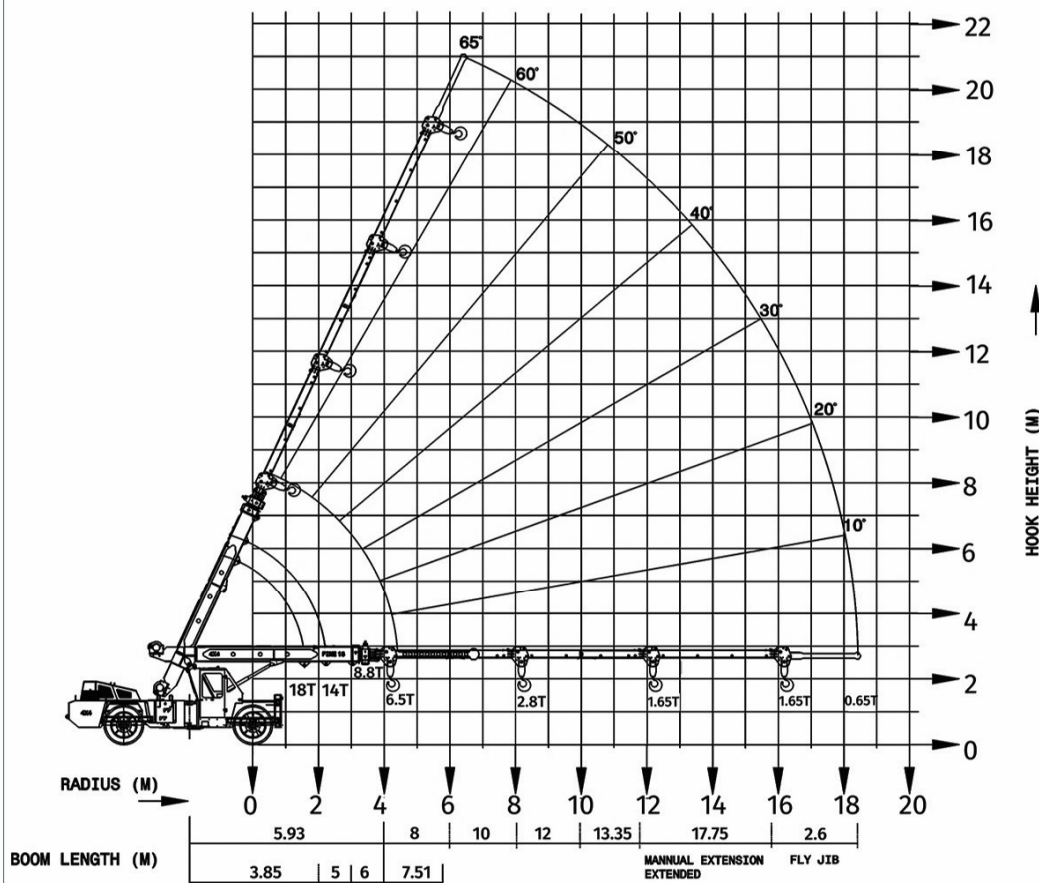


FINE HD SERIES CRANE

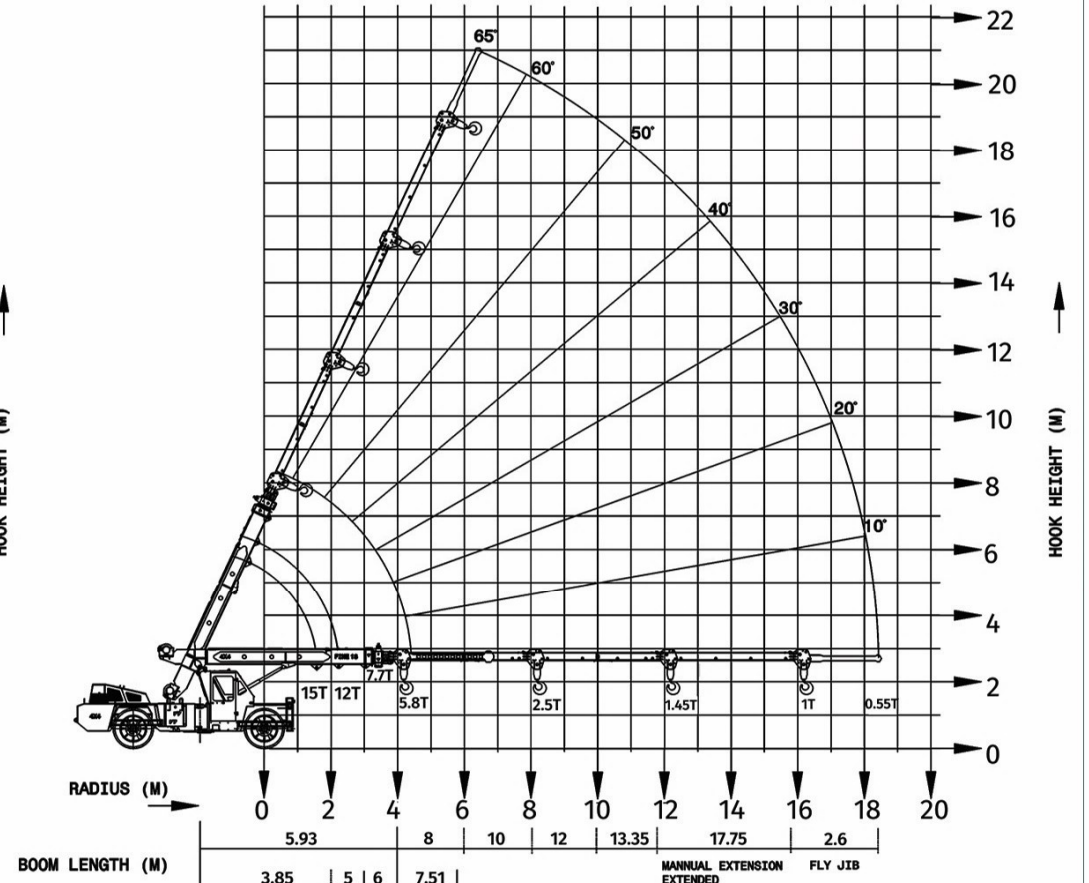
SPECIFICATIONS



LOAD CHART



HD 180



HD 150



FINE EQUIPMENTS INDIA PVT LTD

Fine Centre, Behind Shroffs Shrushti,
Off Mumbai Bangalore Highway, Mhalunhe
Pune 411045 - India

Mob: +91 83082 88600 / 93264 39921

Email: info@fineequipment.net

Web: www.fineequipment.net



SCAN ME



DOWNLOAD
BROCHURE