

# UR-W706C

UR-W706C features maximum hook height of 19.5m with its six section hydraulic boom.

With a 6.05t lifting capacity at 3.0m and maximum hook height of 19.5m, it is compact enough to travel through a standard size double doorway. Its compactness and flexibility allow it to travel where no other cranes could have gone before.

Radio remote control

7980kg  
Mass of crane

Max  
19.5m  
Hook height (Approx.)  
(Above ground level)

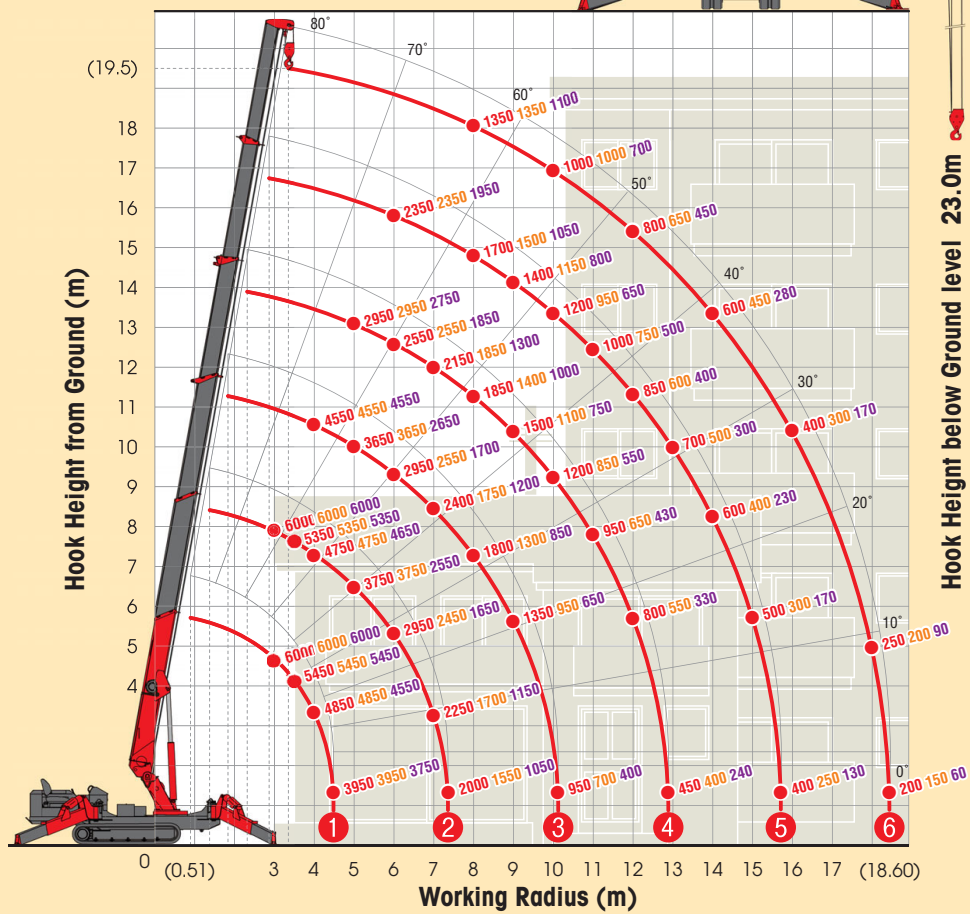
Max  
6.05t  
×3.0m  
Lifting capacity

Max  
18.60m  
Working radius

with electric power unit

## WORKING RANGE & NET RATED LOADS (kg)

Outrigger ● Max-extended Mid-extended Min-extended



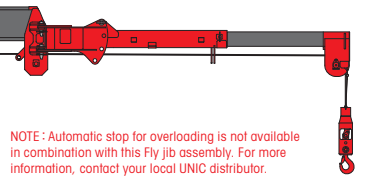
Automatic stop for overloading (ML-300)



Three colored lamp



Fly jib assembly (Options)



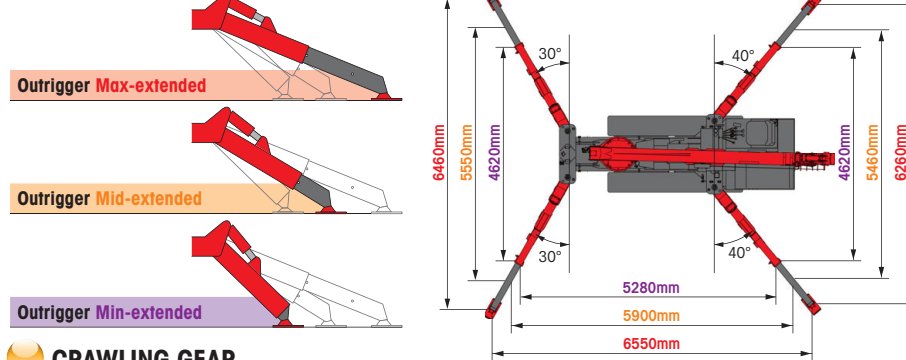
NOTE : Automatic stop for overloading is not available in combination with this Fly jib assembly. For more information, contact your local UNIC distributor.

Length	at 2.11m or at 3.11m
Lifting capacity	Max. 800kg
Tilt angles	0°, 20°, 40°, 60°

## SPECIFICATIONS

Crane model	UR-W706C2
Lifting capacity	Max. 6.05t at 3.0m
Working radius	Min. 0.51m, Max. 18.60m
Hook height (Approx.)	Max. 19.5m
Length	Max. 23.0m with 4-part line Min. 4.80m to Max. 19.20m
Boom	Extending speed [with electric power unit] 14.40m / 52.0 sec. [50Hz] 14.40m / 110.0 sec. [60Hz] 14.40m / 90.0 sec. Raising angle / speed [with electric power unit] 0° to 80° / 16.0 sec. [50Hz] 0° to 80° / 45.0 sec. [60Hz] 0° to 80° / 37.0 sec. Structure 6-section box beam type telescoping boom
Winch	Single line speed [with electric power unit] 44.0 m/min (at 4th layer) [50Hz] 15.6 m/min (at 4th layer) [60Hz] 17.7 m/min (at 4th layer) Hook speed [with electric power unit] 11.0 m/min (at 4th layer with 4-part line) [50Hz] 3.9 m/min (at 4th layer with 4-part line) [60Hz] 4.4 m/min (at 4th layer with 4-part line) Structure Hydraulic motor driven, planetary gear reduction, with automatic mechanical brake and counterbalance valve and wire rope retaining roller Wire rope Construction : IWRC 6 XP F(29) / Diameter x Length : 10mm x 111.0m / Breaking strength : 92.2kN [9400 kgf] Hook block 6.00t capacity, 2 sheaves with safety latch
Slewing	Range 360° continuous rotation on a ball bearing race Speed [with electric power unit] 2.5 rpm [50Hz] 1.8 rpm [60Hz] 1.8 rpm Structure Hydraulic motor driven, worm gear reduction, spur gear reduction, and worm self-locking brake (supported by ball bearings)
Outriggers	Horizontal, Vertical A double acting hydraulic cylinder, direct pushing type (Directly connected with hydraulic automatic lock device)
Hydraulic pump	Type Variable delivery piston pump Rated pressure 24.5 MPa [250 kgf/cm <sup>2</sup> ] Rated delivery 81 liters/min Rated revolution 2500 rpm
Hydraulic oil tank capacity	120 liters
Safety devices	Pressure relief valve for hydraulic circuit / Counterbalance valves for boom raising and boom telescoping cylinders / Pilot-operated check valves for outrigger cylinders (Horizontal) Double pilot-operated check valves for outrigger cylinders (Vertical) / Boom angle indicator with load indicator / Hook safety latch / Automatic mechanical brake for winch Automatic stop for overwinding / Overwinding alarm / Automatic stop for leaving minimum wire rope / Emergency stop button / Inter-lock device of crane and crawling levers Inter-lock device of crane and outriggers / Level / Automatic stop for overloading (ML-300) / Digital load meter / Three colored lamp / Headlight / Boom outrigger monitor lamp

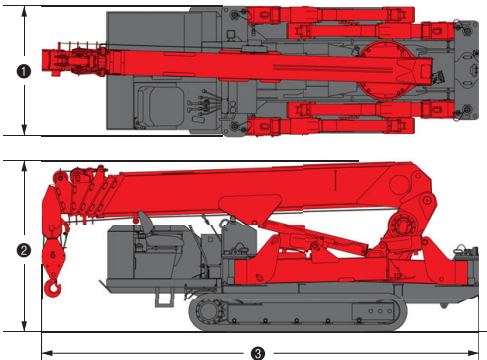
## OUTRIGGER POSITIONS



## CRAWLING GEAR

Crane model	UR-W706C2
Crawling speed	0-2.9 km/h, forward / backward [with electric power unit] [50Hz] 0-1.0 km/h [60Hz] 0-1.2 km/h
Hill climbing ability	23°
Tread length	2275mm
Ground contact pressure	43.2 kPa [0.44 kgf/cm <sup>2</sup> ] [with electric power unit] 44.1 kPa [0.45 kgf/cm <sup>2</sup> ]
Engine manufacturer / model	Mitsubishi / S4L2
Displacement	1758cc
Maximum output	23.00kW(31.3PS) / 2500 rpm, Rated output
Fuel	Diesel
Fuel tank capacity	74 liters
Steering	Hydraulic drive independent of left / right
Starter	Starter motor

## DIMENSIONS



Crane model	UR-W706C2
① Total width	1670mm
② Total height	2185mm
③ Total length	5610mm
Mass of crane	7920kg [8080kg] [with electric power unit]

## Electric power unit specifications

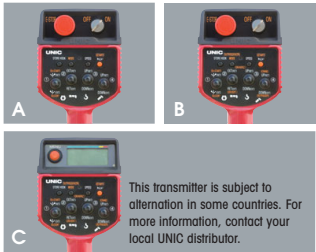
Rated power	7.5kW (3-phase 4 poles)
Voltage	AC 200V or 400V (50Hz / 60Hz) 3 phase 4P

\*Not included any cables.



Standard equipments and Options

UNIC MINI-CRAWLER CRANE



1 Radio remote control  
A W094C, W295C  
B W376C, W546C, W547C, W706C  
C W1006C



2 Cable remote control



3 Load meter



4 Digital load meter  
Load indication is each 20kg (0.02t).



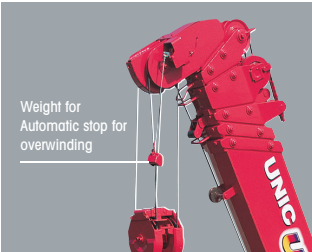
5 Automatic stop for overloading  
KM-100 W376C, W546C, W547C



6 Automatic stop for overloading  
ML-300 W706C



7 Safe load indicator



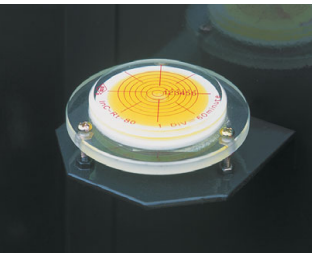
8 Automatic stop for overwinding



9 Automatic stop for leaving minimum wire rope



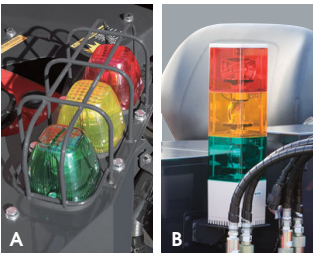
10 Emergency stop button  
A W094C, W295C  
B W376C, W546C, W547C, W706C, W1006C



11 Level



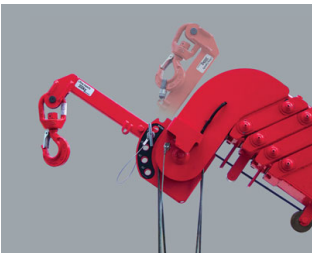
12 Turn over prevention device



13 Three colored lamp  
A W295C  
B W376C, W546C, W547C, W706C, W1006C



14 Boom outrigger monitor lamp



15 Searcher hook assembly



16 Fly jib assembly



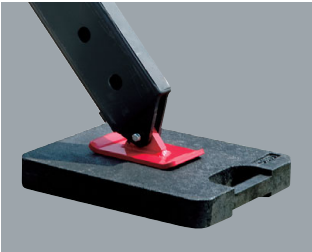
17 Single line hook



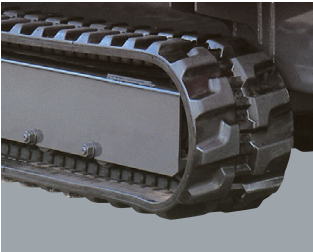
18 Working light



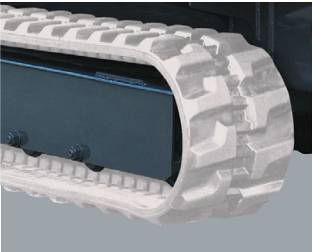
19 Headlight



20 Outrigger mats



21 Black crawler belt



22 White crawler belt



23 White crawler belt (as spare)



24 Rubber Pad

25 20M cable for motor (200V)

26 20M cable for motor (400V)

STANDARD EQUIPMENTS / OPTION [★ Standard ● Option — Not available]

Crane model	UR-W094C		UR-W295C		UR-W295C1		UR-W376C2		UR-W546C2		UR-W547C2		UR-W706C2		UR-W1006C2		Crane model
	UR-W094CP2E		UR-W295CP2A	UR-W295CP2AM	UR-W295C1A	UR-W295C1AM	UR-W376C2A	UR-W376C2AM	UR-W546C2A	UR-W546C2AM	UR-W547C2A	UR-W547C2AM	UR-W706C2A	UR-W706C2AM	UR-W1006C2A	UR-W1006C2AM	
Engine manufacturer / model	Mitsubishi / GB300LE		Mitsubishi / GB400LE	Mitsubishi / GB400LE	Kubota / Z482-E3B	Kubota / Z482-E3B	Yanmar / 3TNV76	Yanmar / 3TNV76	Yanmar / 3TNV76	Yanmar / 3TNV76	Yanmar / 3TNV76	Yanmar / 3TNV76	Mitsubishi / S4L2	Mitsubishi / S4L2	Yanmar / 4TNV88	Yanmar / 4TNV88	Engine manufacturer / model
Fuel	Petrol		Petrol	Petrol	Diesel	Diesel	Diesel	Diesel	Diesel	Diesel	Diesel	Diesel	Diesel	Diesel	Diesel	Diesel	Fuel
Electric motor	—		—	AC 200V or 400V	—	AC 200V or 400V	—	AC 200V or 400V	—	AC 200V or 400V	—	AC 200V or 400V	—	AC 200V or 400V	—	AC 400/400-440V	Electric motor
1 Radio remote control	★		★	★	★	★	★	★	★	★	★	★	★	★	★	★	Radio remote control
2 Cable remote control	●		●	●	●	●	●	●	●	●	●	●	●	●	●	●	Cable remote control
3 Load meter	★		★	★	★	★	—	—	—	—	—	—	—	—	—	—	Load meter
4 Digital load meter	—		●	●	●	●	★	★	★	★	★	★	★	★	★	★	Digital load meter
5 Automatic stop for overloading (KM-100)	—		●	●	●	●	★	★	★	★	★	★	—	—	—	—	Automatic stop for overloading (KM-100)
6 Automatic stop for overloading (ML-300)	—		—	—	—	—	—	—	—	—	—	—	★	★	—	—	Automatic stop for overloading (ML-300)
7 Safe load indicator	—		—	—	—	—	—	—	—	—	—	—	—	—	★	★	Safe load indicator
8 Automatic stop for overwinding	★		★	★	★	★	★	★	★	★	★	★	★	★	★	★	Automatic stop for overwinding
9 Automatic stop for leaving minimum wire rope	★		★	★	★	★	★	★	★	★	★	★	★	★	★	★	Automatic stop for leaving minimum wire rope
10 Emergency stop button	★		★	★	★	★	★	★	★	★	★	★	★	★	★	★	Emergency stop button
11 Level	★		★	★	★	★	★	★	★	★	★	★	★	★	★	★	Level
12 Turn over prevention device	—		★	★	★	★	●	●	—	—	—	—	—	—	—	—	Turn over prevention device
13 Three colored lamp	—		●	●	●	●	★	★	★	★	★	★	★	★	★	★	Three colored lamp
14 Boom outrigger monitor lamp	—		—	—	—	—	★	★	★	★	★	★	★	★	★	★	Boom outrigger monitor lamp
15 Searcher hook assembly	—		●	●	●	●	●	●	●	●	●	●	—	—	—	—	Searcher hook assembly
16 Fly jib assembly	—		●	●	●	●	●	●	●	●	—	—	●	●	★	★	Fly jib assembly
17 Single line hook	—		●	●	●	●	—	—	—	—	—	—	—	—	—	—	Single line hook
18 Working light	●		●	●	●	●	●	●	●	●	●	●	●	●	—	—	Working light
19 Headlight	—		—	—	—	—	★	★	★	★	★	★	★	★	★	★	Headlight
20 Outrigger mats	●		●	●	●	●	●	●	●	●	●	●	●	●	—	—	Outrigger mats
21 Black crawler belt	★		★	★	★	★	★	★	★	★	★	★	★	★	—	—	Black crawler belt
22 White crawler belt	●		●	●	●	●	●	●	—	—	—	—	—	—	—	—	White crawler belt
23 White crawler belt (as spare)	●		●	●	●	●	●	●	—	—	—	—	—	—	—	—	White crawler belt (as spare)
24 Rubber Pad	—		—	—	—	—	—	—	—	—	—	—	—	—	★	★	Rubber Pad
25 20M cable for motor (200V)	—		—	●	—	●	—	●	—	●	—	●	—	●	—	—	20M cable for motor (200V)
26 20M cable for motor (400V)	—		—	●	—	●	—	●	—	●	—	●	—	●	—	—	20M cable for motor (400V)