

**FINE ALLIANCE**  
EQUIPMENTS PVT. LTD.



Plot No.7 , Gat no. 457 & 458, Shindewadi, Tal, Khandala,

Shindewadi, Satara - 412801, Maharashtra - INDIA

Email: [info@finealliance.in](mailto:info@finealliance.in)

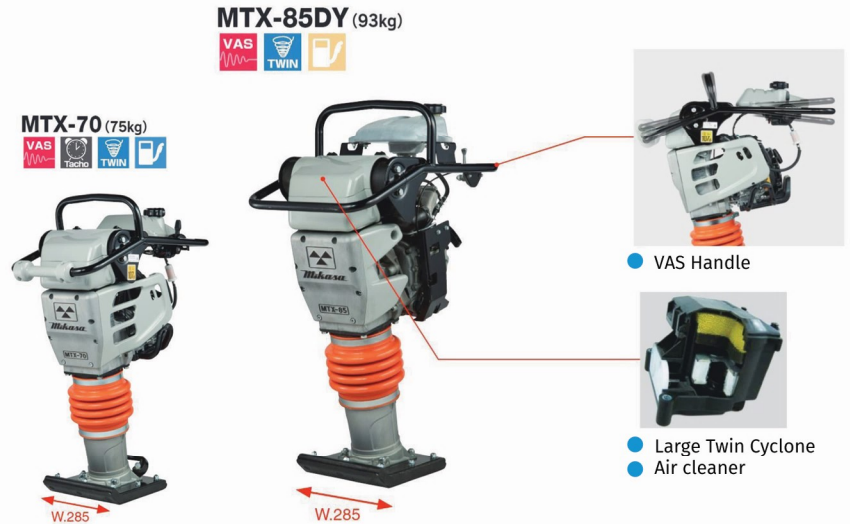
Tel: +91 99301 84169 , 98182 20925 , 98197 11639



# TAMPING RAMMER

## MTX Series

- The newly designed clutch drum is designed to automatically eject wear particles via centrifugal force.
- The shock rubber of handle has a pin to prevent falling down when the rubber is worn out.



### MTX Specification

Model	Weight (kg)	Dimension (mm)	Plate Size (mm)	Jumping Stroke (mm)	Impact force kN (kgf)	Impact number per min.	Fuel Tank Capacity (ltrs)	Power Source kW (PS)
MTX-70 HDR	75	H:1,027 W:350 L: 788	W1: 285 L1 : 340	50 -80	14.9 (1.520)	644-695	5.5	Honda GXR120 gasoline max. output 2.7(3.6)
MTX-85 DY	93	H:1,063 W:410 L: 740	W1: 285 L1 : 340	50 -80	15.7 (1.600)	656-698	2.6	Yanmar, L48N diesel max output 3.5 (4.7)

# REVERSIBLE COMPACTOR



### MVH Specification

Model	Weight (kg)	Dimension (mm)	Plate Size (mm)	Vibrating Frequency Hz (V.P.M)	Centrifugal force	Max. traveling speed (m/min)	Max. Limited grade ability (%)	Power Source
					kN (kgf)			kW (PS)
MVH-158DY	162	H : 980 L : 1140	W : 430 L1 : 700	90 (5,400)	25.0 (2,551)	26	30	Yanmar L48N diesel max. output 3.5(4.7)
MVH-208GH	210	H : 1010 L : 1310	W : 500 L1 : 720	87 (5200)	37.0 (3772)	27		Honda GX270 Petrol Max. output 6.3(8.6)
MVH-308DSY	341	H : 1030 L : 1540	W : 445 L1 : 860	73 (4,400)	45.0 (4,600)			Yanmar L70 N diesel max. output 4.9 (6.7)

# CONCRETE CUTTER

## MCD-T18H-PLUS



Mikasa's next-generation concrete cutter allows for smoother cutting works by a new water sprinkler

- RELIABLE PERFORMANCE**  
 Water injected cut  
 Aluminum die-cast belt cover  
 Cyclone pre cleaner for dust filtering and engine maintenance
- HIGH OPERABILITY**  
 Cutting gauge in the panel  
 Lift handle  
 Anti-vibration handle  
 Stop switch  
 Foot-operated parking brake
- EQUIPMENT FOR FUNCTION**  
 50 L water tank  
 Easy blade setting with ultra light blade cover  
 Taco hour meter

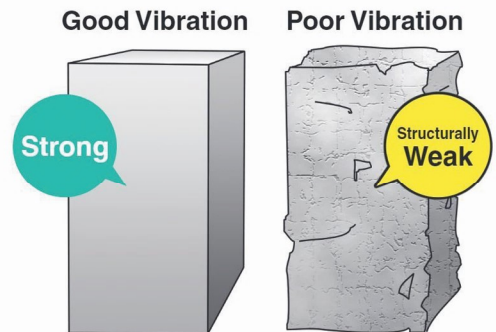
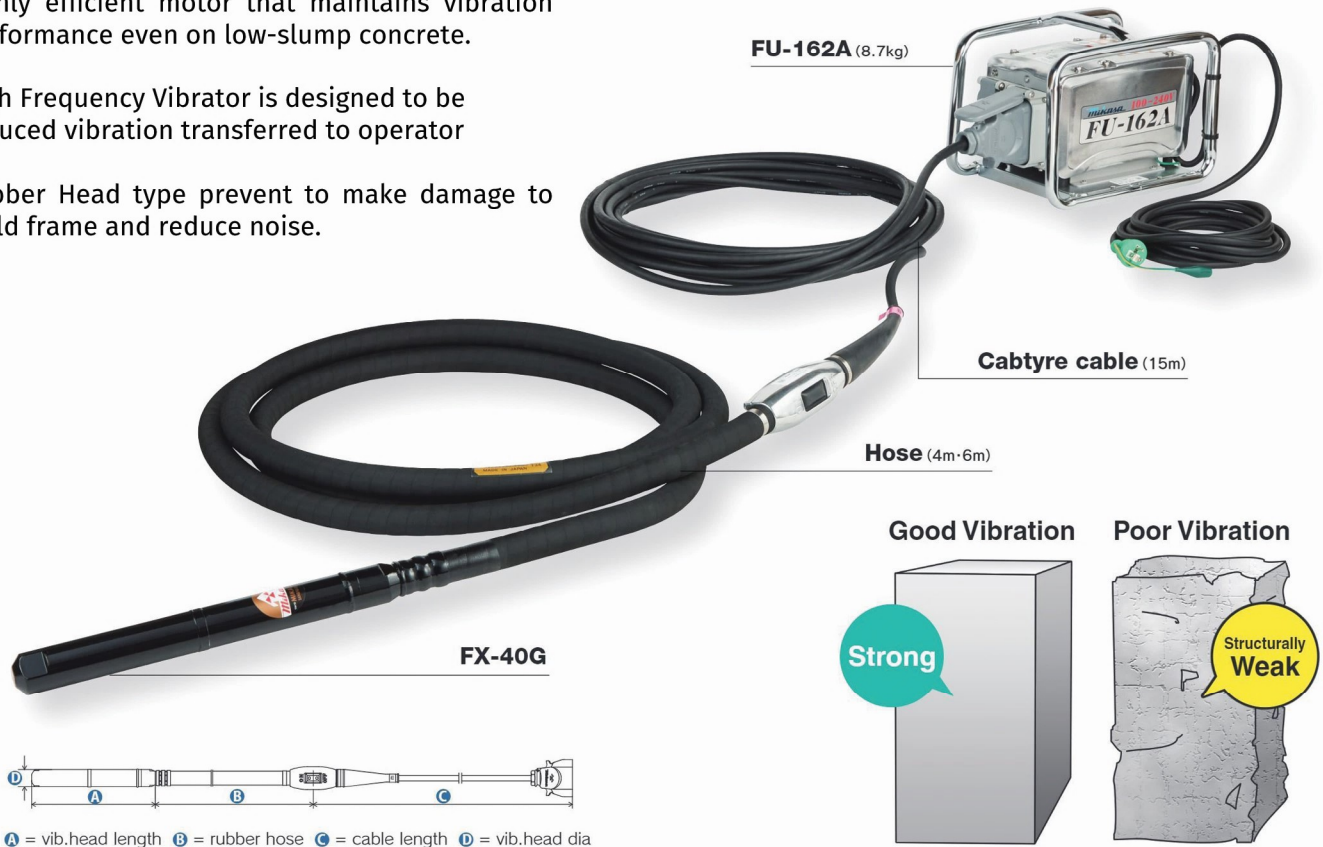


### MCD Specification

Model	Weight (kg)	Dimension (mm)	Blade Size mm (Inch)	Cutting Depth (mm)	Arbor Size mm	Adjusting for cutting depth	Traveling system	Water tank Capacity Litrs	Power Source KW(ps)
MCD T18H-PLUS	133	H:916 W:509 L:1414	254 (10") 457 (18")	70 - 170	27	manual (Lifting screw system)	Hand Push	50	Honda GX390 gasoline max. output 8.7 (11.8)

# HIGH FREQUENCY CONVERTOR VIBRATOR

- The vibrator is equipped with a powerful and highly efficient motor that maintains vibration performance even on low-slump concrete.
- High Frequency Vibrator is designed to be reduced vibration transferred to operator
- Rubber Head type prevent to make damage to mold frame and reduce noise.



< Replaceable Rubber head cap >

## FX Specification

model	vib.head dia. x shaft length (mm)	Rubber Hose (m)	Voltage (V)	Cycle (Hz)	amperage (A)	Ampituede (mm)	Vibration Hz (V. P.M)	Cable Length (M)	weight 4m / 6m (Kg)
FX-30E (FX -30 RE)	32 x 396 (32 x 422)	4 or 6	48 three phase	200 / 240	4	1.8	200 / 240 (12000 / 14000)	15	9.5 / 11.0
FX-40G (FX-40RG)	43 x 396 (43x 422)				6	1.5			12.0 / 13.7
FX-50G (FX - 50RG)	52 x 413 (52 x 442)				9.5	1.9			14.8 / 16.5
FX-60E (FX-60RE)	61 x 485 (61 x 510)				18	2.0			18.0 / 19.9

### Soft start

Soft-start circuit is applied. It makes vibrators start smoothly by control of output, even when overload or startup.

### Sheet type switch

Sheet type switch is applied for dust- resistance, water-resistance and visibility. The output frequency is changeable to make it fit with suitable frequency as per each site.

### Error display

When Inverter become abnormal condition, it shows error by a number.

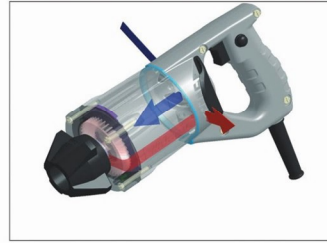
## FU Specifications

Model	Dimension mm	Input				Output				Number of outlets	Weighth Kg
		V	A	KVA	Hz	V	A	KVA	Hz		
FU-162A	H:248 W: 240 L: 324	100/200 Single phase	20/14	2.0/2.8	50/60	48 three phase	19.2	1.6	100-240	2	8.7

# PORTABLE CONCRETE VIBRATOR

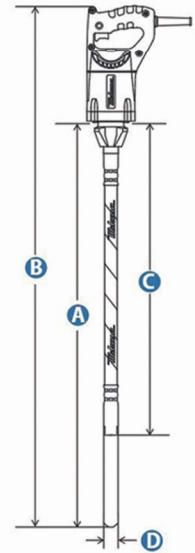


## UM-F38



There are Air Vents on the Grip side of UM-motor.  
This structure prevents an invasion of concrete.

- Improved hand arm vibration by separate design for motor and handle
- Improved durability for switch cover and switch lock cover
- New Handle Grip lighten the burden
- Easier maintenance by separate design for cord and cord protector



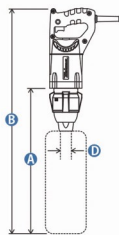
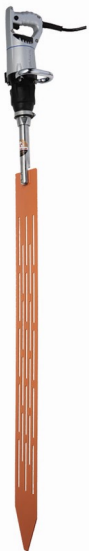
A = shaft length B = total length  
C = hose length D = vib.head dia

### UM Specification (for STD Length)

Model	vib.head dia. [D] x shaft length [A] (mm)	inner shaft dia. (mm)	rubber casting dia. (mm)	amplitude (mm)	vibration Hz (V.P.M.)	power (W) (single phase)	weight(kg)
UM-F23	23 x 770	8	20	1.2	200-258 (12,000 - 15,500)	280	4.3
UM-F28	28 x 770		1.8	4.7			
UM-F32	32 x 770		1.9	4.9			
UM-F38	38 x 770		2.0	5.2			

hose length (m)	0.6 (STD)	1	1.5	2
shaft length (mm)	770	1.170	1.670	2.170

## UM-ZS1200



### UM-ZS 1200 Specification

Weight	(KG)	7.9
Vibration cylinder dimensions and length (mm)	Diameter (D)	32
	Length (A)	1500
	Length (B)	1730
Plate dimensions (mm)	Width	120
	Length	1220
Amplitude	(Hz/v.p.m)	200~258 / (12,000~15,500)
Commutator motor cord 4.0m included		280(W), 4.5(A), Weight(3.0kg)

## UM-ZF100A



model	vib.head dia. [D] x shaft length [A] (mm)	inner shaft dia. (mm)	rubber casting dia. (mm)	amplitude (mm)	vibration Hz (V.P.M.)	power (W) (single phase)	weight(kg)
UM-ZF100A		115(W) x 78 (T)			166-200 (10000-12000)	280	5.3

# GS CONCRETE VIBRATOR

## PENDULOUS VIBRATOR

Φ60

Φ45

Φ38

Φ32

Φ28

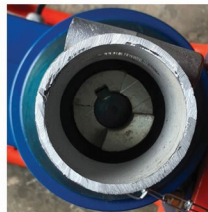


Hose 4/6/9/12M

### Coupling type



Male

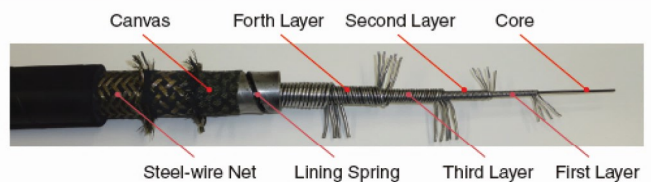


Female



### High Torque

- Inner shaft is hard steel wires. This is strong in tensile and twisting stress, and has resistance to wear.
- Outer hose is robust structure with high torque resistant. Strong against high speed running, vibration and water.
- Outer liner on outer hose prevent inner shaft from premature damage by bending



### GS Specification

model	vib.head dia. x shaft length (mm)	Flexible shaft dia. (mm)	rubber casting dia. (mm)	Rubber Hose (m)	Amplitude Hz (V.P.M)	Vibration Hz (V. P.M)	Shaft Set weight 4m / 6m (Kg)
GS-28	28x477	10	30	4 or 6	1.4	150-208 (9,000 - 125000)	10.6/14.7
GS-32	32 x 520				1.8		11.2 / 15.1
GS-38	38 x 480				2.0		11.9 / 15.7
GS-45	45 x 494				2.4		13.3 / 17.4
GS-60	60 x 479	13	32	6	2.4		22.3